



Who we are:

- Green Mountain Power (GMP) is focused on a new way of doing business to meet the needs of customers with integrated energy services that help people use less energy and save money, while continuing to generate clean, cost-effective and reliable power in Vermont.
- GMP is the first utility in the world to get a B Corp certification, meeting rigorous social, environmental, accountability and transparency standards and committing to use business as a force for good
- In 2013, Solar Electric Power Association named GMP Utility of the Year
- In 2014, Vote Solar named GMP a Solar Champion
- Founded in 1893 as Vergennes Electric Company
- Headquarters located in Rutland and Colchester with 15 service centers around the state
- 600 employees as of 10/31/2014
 ~295 are members of IBEW Local 300

Our customers

- We have 259,947 customers in 202 towns in a 7,500 square mile service territory. (as of 10/1/2014)
 - 65 industrial customers
 - 38,878 commercial customers
 - 220,845 residential customers
 - 159 public street and highway lighting
- GMP averages 90% in customer satisfaction rankings

Economic Contribution to Vermont

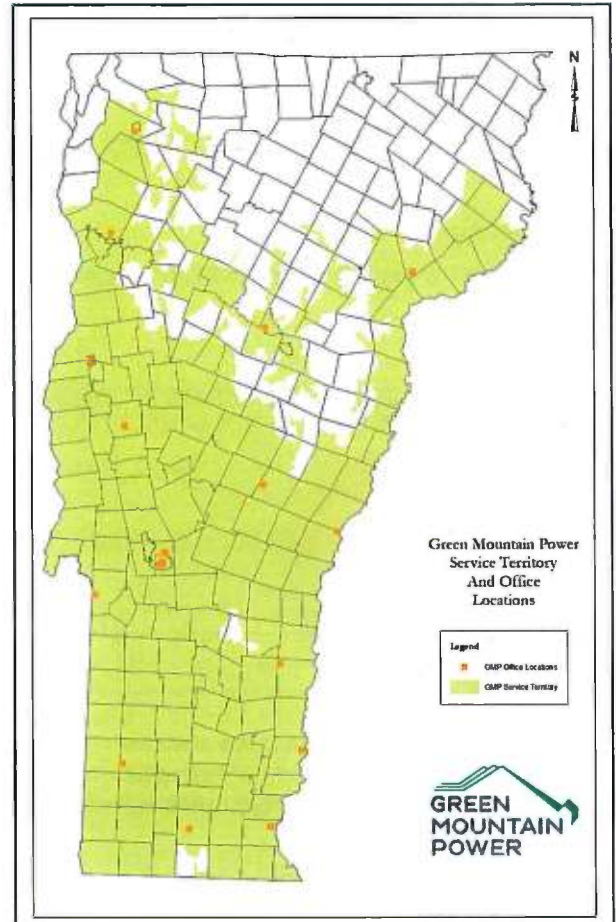
- Annual Property taxes: \$20,900,000
 Paid to 210 Vermont communities
- Annual Gross revenue tax: \$6,200,000

Rates

- October 2014 saw a rate decrease of 2.46 percent

Infrastructure

- 185 substations
- 329,580 poles
- 976 miles of transmission lines
- 11,273 miles of distribution lines
- \$107 million in total capital investments in FY14 on behalf of customers, with \$94 million planned for FY 2015
- Green Mountain Power rigorously inspects and maintains this infrastructure for optimal performance and reliability



Map: towns in GMP service territory and location of our facilities

Energy Innovation Center

- Staff at the EIC in downtown Rutland work with partners in the public and private sectors to implement new and proven technologies and programs to empower customers to make the best energy choices possible, with the aim of increasing comfort while reducing costs and carbon.
- GMP's goal to make Rutland the Solar Capital of New England has been expanded. We expect to have 10 MW of new solar generation capacity in Rutland City by the end of 2015, two years faster and 3.75 MW more than our initial goal.

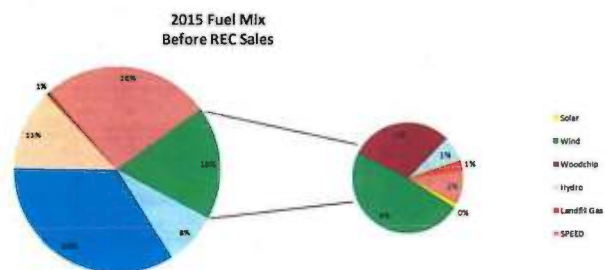
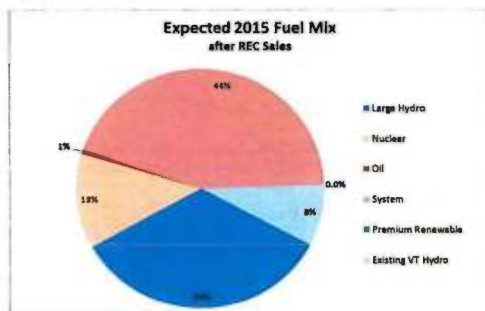
Energy Portfolio

- GMP's customers used 4.3 million MWh of electricity in FY 2014

Peak Demand:

- GMP's peak demand in FY2014 was 715 MW on 7/2/14 between 1 p.m. and 2 p.m.

2015 Fuel Mix



Market Purchases do not have any environmental attributes associated with them, as such these purchases are treated as having the ISO-NE system residual mix. The system residual mix changes over time but as of Q2 2014 it was primarily natural gas (41%), nuclear (30%), and hydro (9%).

GMP-Owned Renewable Generation

- 100+ MW of hydro capacity, at 32 hydro facilities
- 500+ kW of solar generation capacity, with more in development, including combined solar with storage
- 69 MW wind power capacity
 - 63 MW Kingdom Community Wind (8 MW of output is sold to Vermont Electric Coop)
 - 6 MW Searsburg
 - 100 kW NPS wind turbine in Vergennes and Bridport, with another ready to construct in Ferrisburg

Net-Metered Generation

- 42.2 MW net metered customers online (5.9%) with 16.2 MW in the queue (2.2%) as of 1/15/14.
- 107.25 MW is the 15% cap enacted in April 2014.



Robert Dostis, Director of Government Affairs

802-655-8412 / cell 802-279-1351 Robert.Dostis@greenmountainpower.com

1/27/15